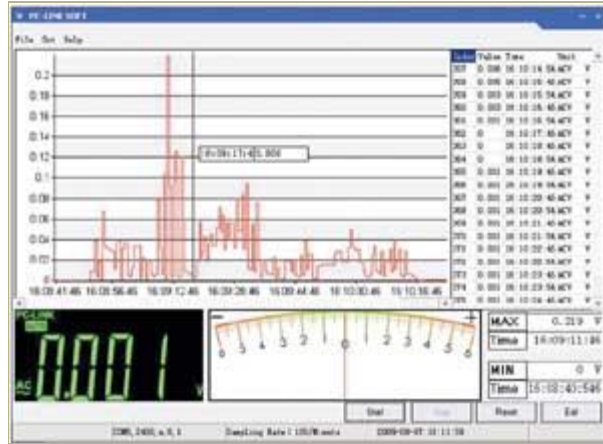


Key Features:

- Display: 6000 counts
- USB port connect to PC(VA40B/VA40R)
- True RMS Measurement(VA40R)
- Relative measurement
- Auto power off
- Data hold
- Back light
- Auto/manual range
- Low power indication
- Diode/Continuity test



This instrument complies with IEC 61010-1 : 2001, **CAT III 1000V** and **CAT VI 600V** overvoltage standards. See Specifications.

SPECIFICATIONS

Basic Functions	Range	Accuracy
DC Voltage	600mV	±0.5%
	6V/60V/600V	±0.8%
	1000V	±1.0%
AC Voltage	600mV/6V/60V/600V	±1.0%
	1000V	±1.5%
DC Current	600µA/6000µA/60mA/600mA/6A/10A	±1.5%
AC Current	600µA/6000µA/60mA/600mA	±1.8%
	6A/10A	±3.0%
Resistance	600Ω/6KΩ/60KΩ/600KΩ/6MΩ	±0.5%
	60MΩ	±1.5%
Capacitance	60nF	±3.0%
	600nF/6µF/60µF/300µF	±5.0%
Logic Frequency	1Hz~1MHz	±(0.1%+3)
Line Frequency	6Hz~10KHz	±(0.05%+8)

Duty Cycle	1%~99%		
Temperature	-55°C~0°C	±5.0%	
	1°C~1000°C	±2.0%	

General Characteristics

Power : 6F22(9V) x1

Product Size: 190(L)x90(W)x40(H) mm

Weight: 500g. Approx. (battery included)

Standard Individual Packing: Gift Box

Standard Accessories:

●User's manual	One piece
● Test leads	One piece
●"K" type Thermocouple	One piece
● Capacitor test lead	One piece
●USB line	One piece
● PC-Link software CD	One piece